



GREEN LAKE COUNTY HIGHWAY COMMISSION

Amy M. Brooks, P.E.
Highway Commissioner

Office: 920-294-4060
Fax: 920-294-4066
Email: abrooks@co.green-lake.wi.us

August 24, 2016

SUBJECT: REQUEST FOR PROPOSAL (RFP)
Green Lake County Local Bridge Project

Green Lake County will be selecting a consultant for the design engineering services for a State – Let Local Bridge Project. Upon successful negotiations with the selected consultant, the County and the Department of Transportation will enter into a three-party design engineering service contract with the consultant. Enclosed please find information for the bridge project.

The Green Lake County Highway Committee will select a consultant based on the responses given and the qualifications of the firm. Interested consultants should respond, with no more than three pages, excluding resumes, with answers to the following questions:

1. Organization Capabilities: Describe your firm's expertise and experience in bridge replacement projects.
2. Staff Qualifications: Provide resumes for each staff member who would be assigned to this project, include any sub consultants.
3. Proposers References: List similar projects your Project Engineer has completed.

Proposals must be submitted by 4pm on September 8, 2016. Please provide one original and five copies. We will not be conducting formal interviews; however, we will select the top five candidates and allow a brief 5 -10 min. introduction and presentation of your qualifications in person at the Highway Committee meeting on September 14, 2016 at 5:30pm. You will be contacted by our office if selected to attend the meeting.

We appreciate your interest in providing engineering services to Green Lake County. Please contact me with any questions.

Sincerely,

Amy M. Brooks, P.E.
Green Lake County Highway Commissioner

Local Bridge Project

Project ID: 6597-00-00, 70

Road Name: CTH S

Bridge ID: P-24-0026

Location: CTH Q - CTH A

Limits: Grand River Bridge P-24-0026

County: Green Lake

Project Length: 300 – 600 feet

Facility Owner: Green Lake County

Project Sponsor: Green Lake County

Existing Facility:

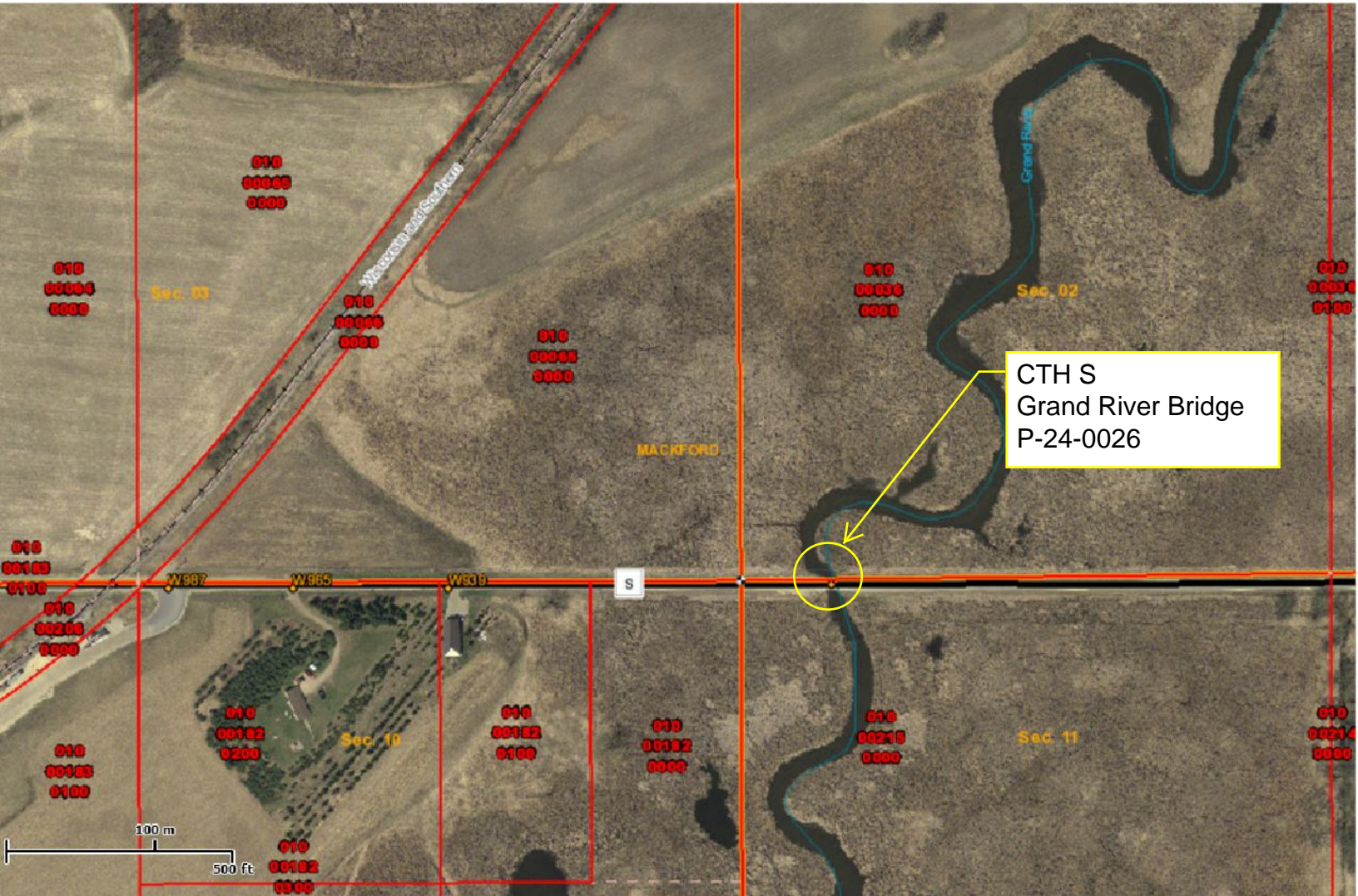
CTH S is a local road with an ADT of 146 in 2015 and a speed limit of 55 mph. P-24-0026 was constructed in 1926 over the Grand River. The bridge is a single span structure, has a clear roadway width of 23 feet and a length of 27 feet. The sufficiency rating is 45.7 and the bridge is structurally deficient. The bridge deck is in poor overall condition with many areas of spalling and cracking. There is scouring along the SE and NW abutments. The average freeboard is less than 6 inches, the bridge will likely need to be raised. There is an at-grade railroad crossing located 1,600 ft to the west of the bridge. Marsh area surrounds the bridge.

Proposed Improvement:

It is proposed to replace the bridge in the same location. DNR will not require full navigational clearance. The construction will include a minimal amount of approach work which will be constructed to county road standards. The road will be closed during bridge construction. The County is planning a road reconstruction project of CTH S from the railroad spur to CTH Q at the same time the bridge is constructed.

GIS Viewer Map

Green Lake County, WI



GIS Viewer Map. Green Lake County, WI. Tue Aug 23 2016 03:38:33 PM.